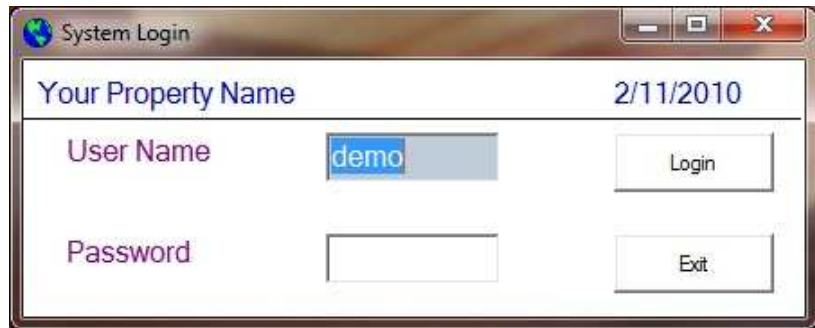


Employee login

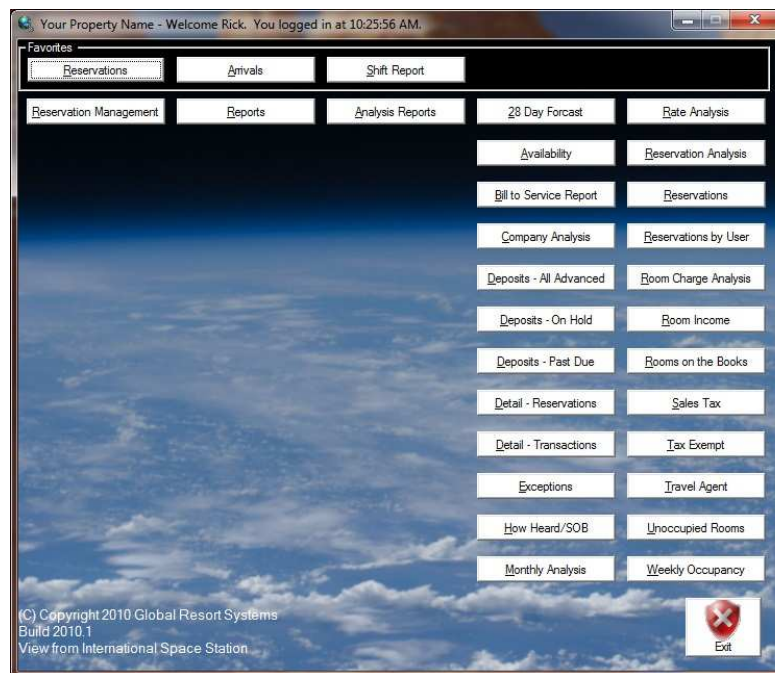
Each employee has a unique login with restrictions. You can limit which users can

- override rates
- post charges
- run reports



A screenshot of a 'System Login' window. The title bar reads 'System Login'. The main area is divided into two sections. The top section is labeled 'Your Property Name' and shows the date '2/11/2010'. Below this, there are two input fields: 'User Name' with the text 'demo' and 'Password' which is empty. To the right of the 'User Name' field is a 'Login' button, and to the right of the 'Password' field is an 'Exit' button.

System menu



All Global Resort Systems functions are accessed through the system menu. All items are button controlled which makes life easy for the lucky few who use touch screens.

Each user's access to the different functions is controlled. For example, you will want your reservationists to access all reservation functions but not necessarily be able to access functions which control pricing.